

T TRANSPORTATION
M MANAGEMENT
C CENTER
www.nhtmc.com

Bureau of Transportation Systems Management & Operations (TSMO)

NH Department of Transportation's Mission

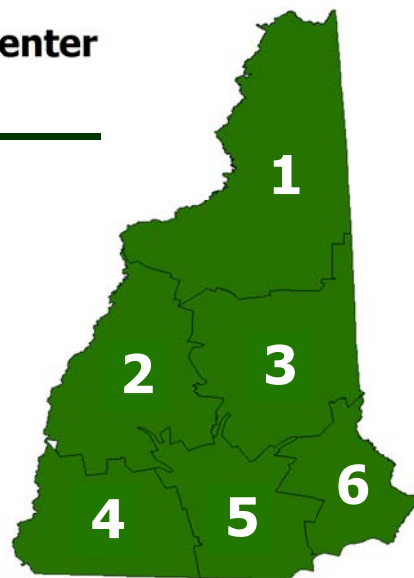
Transportation excellence enhancing the quality of life in New Hampshire.

Transportation Management Center's Mission

The Transportation Management Center's mission is to detect, verify, and respond to incidents that affect the state transportation network. It serves to improve traffic operations, provide the public with current, accurate and useful travel and commuter information that promotes safe and efficient travel, as well as facilitates the maintenance of New Hampshire's transportation system.

New Hampshire Transportation Management Center Coverage Areas by District

The State of New Hampshire is divided into six Districts and the New Hampshire Turnpike System comprising of approximately 9,266 lane miles.



ITS Equipment List

Closed-Circuit Television (CCTV) Cameras

2014 Total 2015 YTD

CCTV cameras are used to pinpoint and monitor traffic events so that information can be disseminated quickly and accurately.

71

75



Dynamic Message Signs (DMS)

DMS aid in sending messages to motorists to inform them of traffic events that may be impacting their route ahead.

48

51



Road Weather Information System (RWIS)

A RWIS collects and displays data from a network of pavement and atmospheric sensors to provide site-specific weather and pavement surface condition information.

17

20



Variable Speed Limit Sign (VSL)

VSL are speed limits that change based on road, traffic, and weather conditions.

10

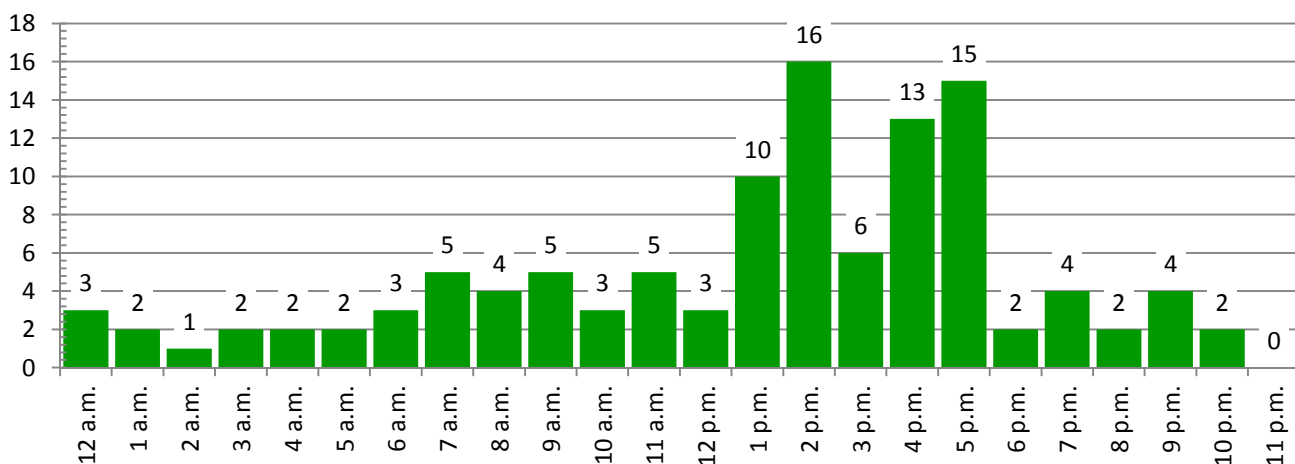
10



Summary

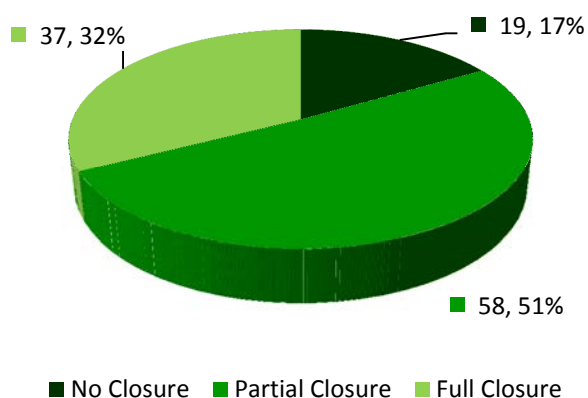
	Current Month	2015 YTD
Unplanned Incidents		
	Total Incidents	
Operators log information about each unplanned incident including date/time, location, traffic impact, and duration.	114	1,062
Planned Incidents		
	Total Planned Incidents	
Operators log information about each planned incident including date/time, location, traffic impact, and duration.	365	1,285
Communication		
	Total Calls	
Operators log all incoming and outgoing control room communications, engaging various incident responders and stakeholders.	2,014	16,530
Work Zones Communication		
	Total Construction Calls	
Construction related activities or communication that's outside of planned incidents.	730	1613
DMS Messages		
	Total Messages	
All changes to DMS are logged and reviewed.	1,004	12,361
Public Outreach		
	Total Webpage Users	
Operators use Twitter and nhtmc.com to inform motorists about traffic events and other road related information.	2,801	24,194

Unplanned Incidents



Increased staffing within the TMC is necessary during normal business hours to better facilitate daily operations while also managing unplanned incidents. Incidents are tracked by the time at which the operators are notified of the start of the event.

Current Month - Incidents by Type



This graph shows the type of incident totals for the month.

Types of Incidents:

No Closure: No lane closures occurred during the incident.

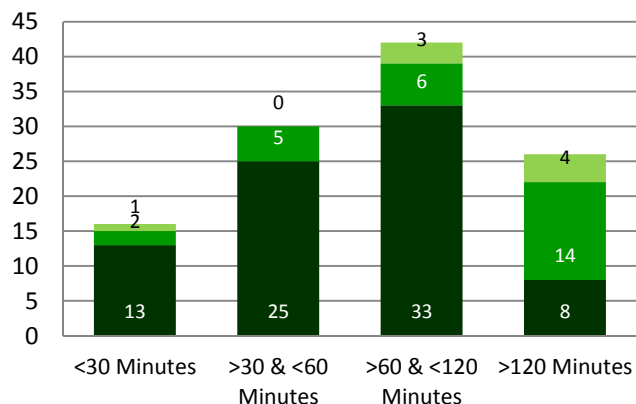
Partial Closure: Only a part of the roadway was closed.

Full Closure: All lanes were closed during the incident.

Severe Weather: The incident was due to severe weather causing an impact to the roadway. (No severe weather for this month.)

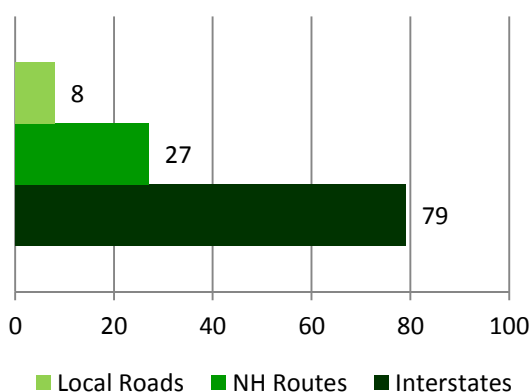
Current Month - Incident Duration

This graph shows the duration history of incidents

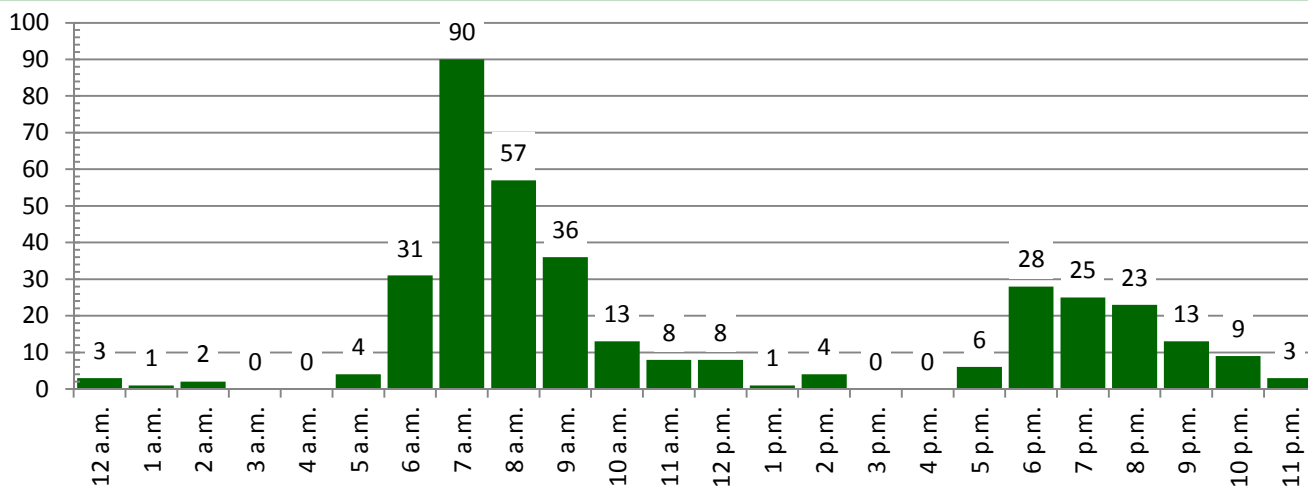


Current Month - Incident by Road

This graph shows which type of roadway the incidents occurred on.

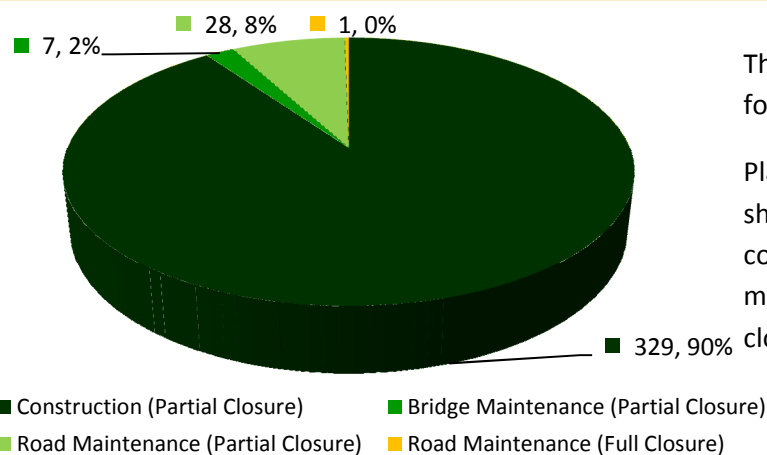


Planned Events



Additional staffing within the TMC is necessary during peak hours to meet the demands of daily planned operations. Planned Events are tracked by the time at which the operators are notified of the start of the event.

Current Month - Incidents by Type

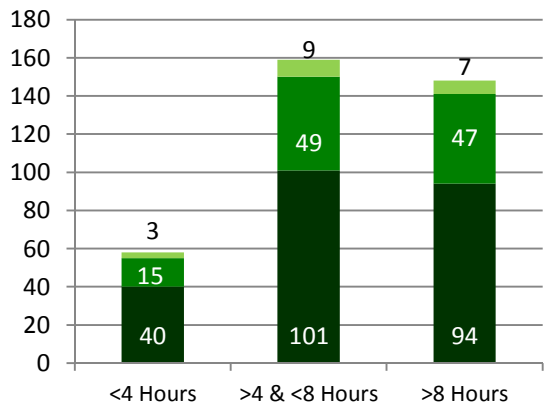


This graph shows the type of incident totals for the month.

Planned Events that impact the roadway, shoulder, or a ramp include events such as construction, bridge maintenance, or road maintenance. Each type will result in a partial closure or full closure.

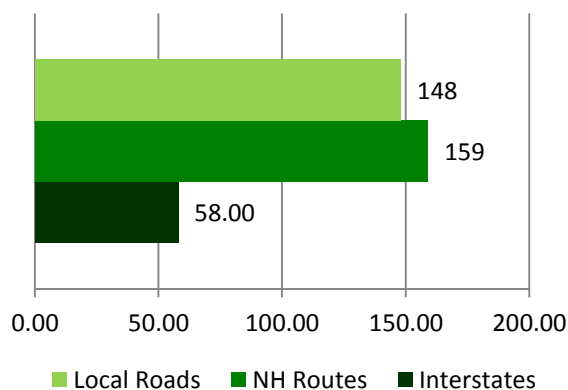
Current Month - Incident Duration

This graph shows the duration history of incidents.



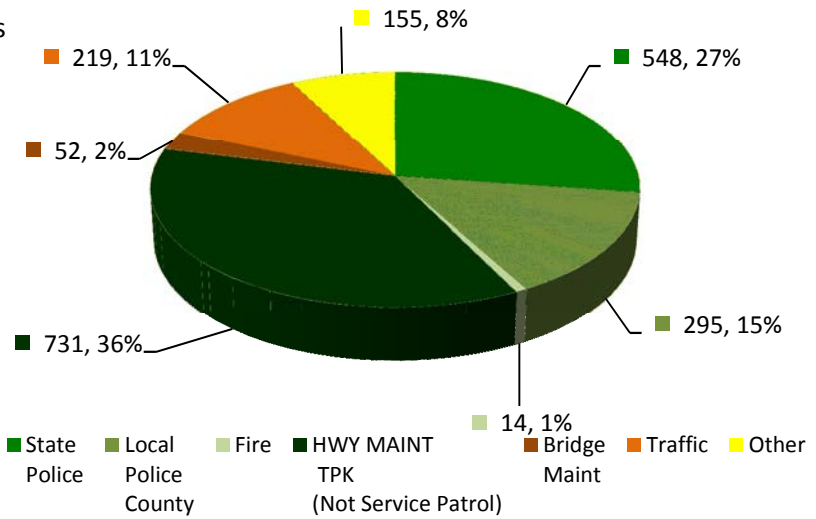
Current Month - Incident by Road

This graph shows which type of roadway the incidents occurred on.



Current Month - Calls by Type

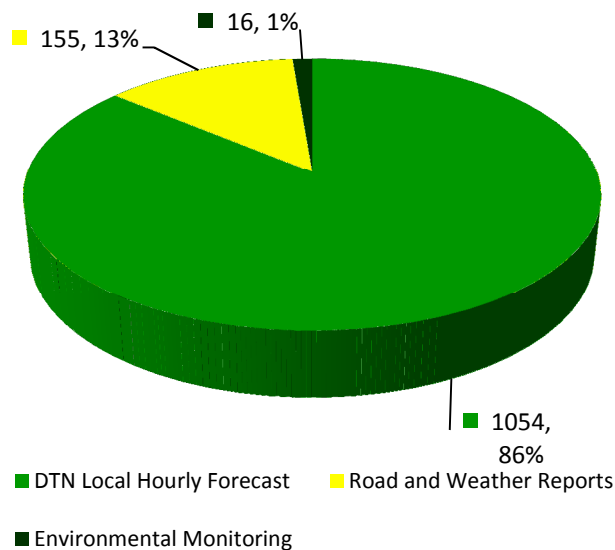
Dispatchers receive different types of calls throughout the day. They log the type of call and review this information monthly.



Disseminated Weather Related Information

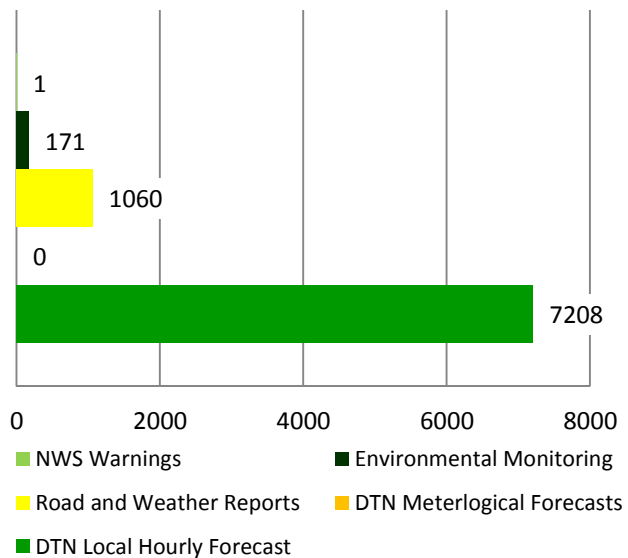
Current Month - By Type

This graph shows the type of weather related information that was disseminated to various other agencies.



2015 Totals

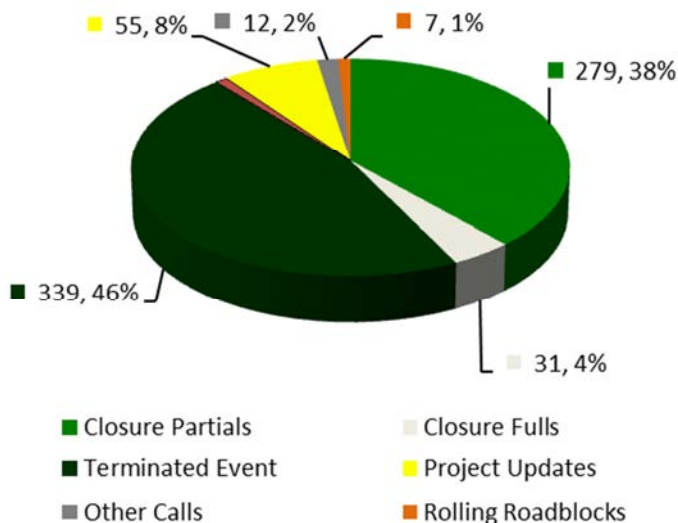
This graph shows the total weather related information that was disseminated for the year so far.



Work Zone Communication

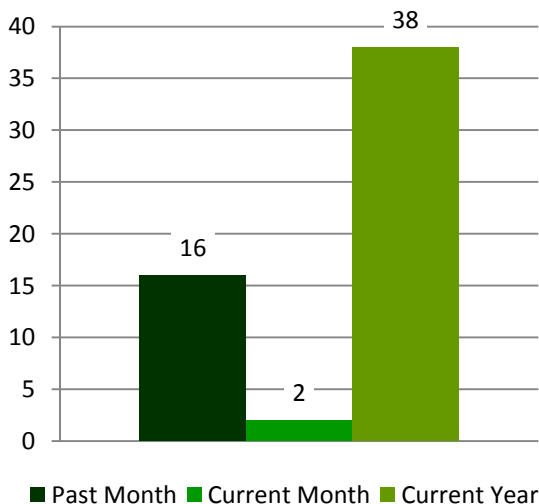
Current Month – Construction Calls

This graph shows the different types of construction related calls that dispatchers receive.

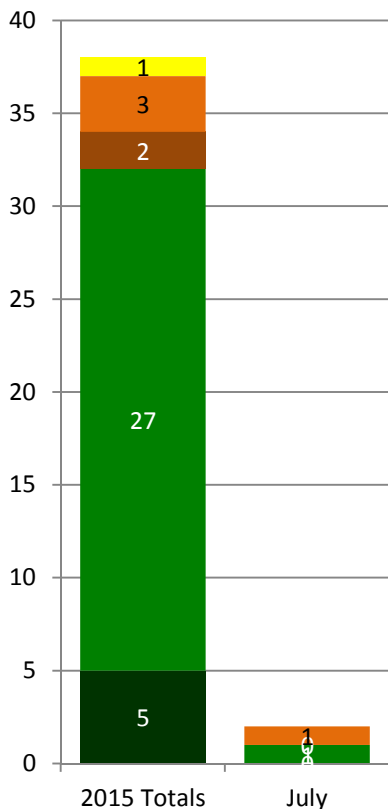


Incidents Occurring in Work Zones

This graph shows the total number of incidents reported on Work Zone Crash Reports from the Bureau of Construction..

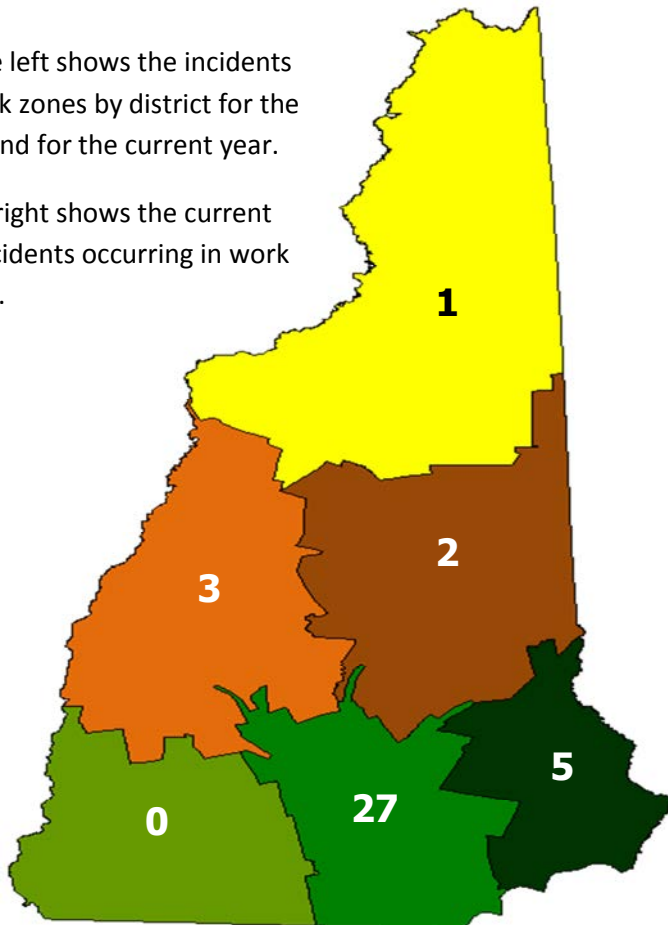


Incidents Occurring in Work Zones by Location



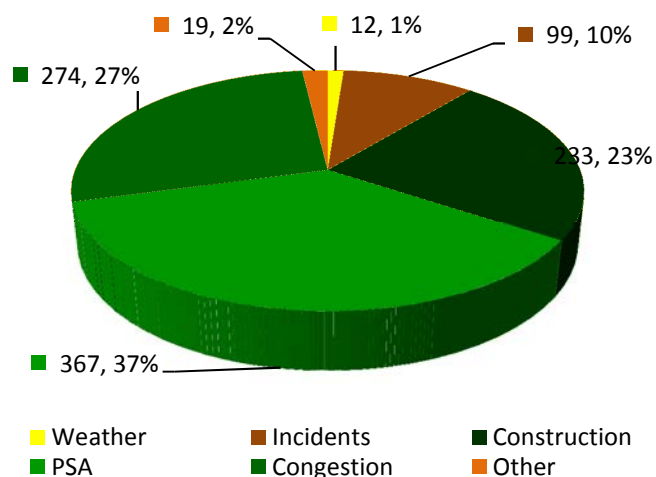
The graph to the left shows the incidents occurring in work zones by district for the current month and for the current year.

The map to the right shows the current year total for incidents occurring in work zones by district.



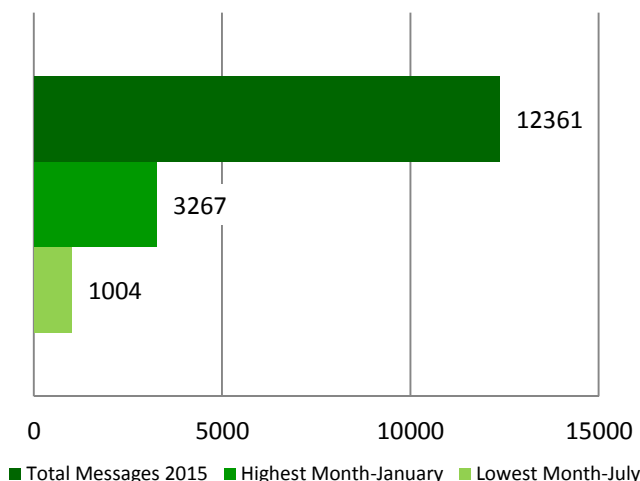
DMS Messages

Current Month - Messages by Type



This graph shows the type of message that was relayed to the public by being displayed on the dynamic message sign (DMS).

Total Messages - 2015



This graph shows the total messages that were posted to DMS for the year so far. It also shows the months with the lowest and highest messages that were posted.

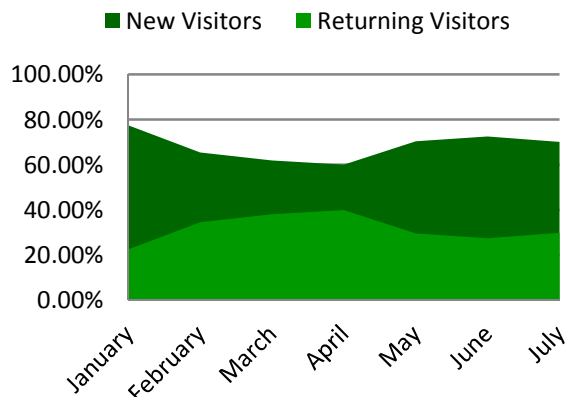
Current Month - Total Messages Posted by Board

101 E 107.6	0	93 N 0.3	81	93 S 85.4	9
101 E 114.8	0	93 N 23.4	44	95 MN 13.0	0
101 E 130.0	15	93 N 32.4	42	95 N 0.4	50
101 E 53.4	22	93 N 36.8	27	95 N 10.6	22
101 W 102.6	24	93 N 43.8	0	95 N 13.0	46
101 W 115.0	0	93 N 57.6	22	95 N 14.8	31
293 N 8.8	24	93 N 7.5	33	95 N 3.0	21
293 S 1.4	29	93 N 82.6	13	95 S 15.4	41
293 S 4.8	18	93 N 99.6	8	95 S 3.4	24
4 E 98.0	18	93 S 117.6	8	95 S 7.6	22
89 N 2.8	10	93 S 122.2	9	FEE N 1.2	0
89 N 18.4	8	93 S 23.4	31	FEE N 18.8	0
89 N 24.2	0	93 S 27.8	13	FEE N 5.2	0
89 N 35.5	20	93 S 32.0	22	FEE S 8.6	0
89 N 55.0	0	93 S 36.0	0	ST N 1.0	0
89 S 10.8	11	93 S 39.0	22	ST N 19.2	0
89 S 2.8	11	93 S 46.2	24	ST S 23.2	0
89 S 31.0	0	93 S 53.4	0	ST S 7.8	0
89 S 55.0	28	93 S 68.8	37	WA W 0.5	0
89 S 58.0	10	93 S 7.2	52		

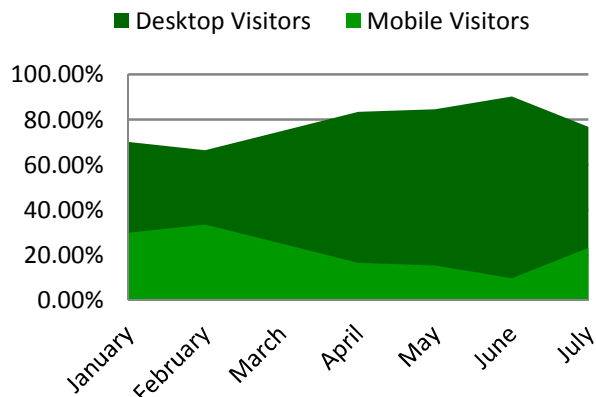
Public Outreach

Current Month - NHTMC Website

New/Returning Visitors



Desktop/Mobile Visitors



This graph shows the ratio of new/ returning users that visited the NHTMC website. A new visitor is a user accessing the website for the first time. A returning visitor is a user who has accessed the website earlier.

This graph shows the ratio of desktop/mobile visitors that accessed the NHTMC website.



18,932 Twitter Followers

Who is Re-Tweeting Real Time Traffic Information?

The Highway Monitor NH 93
 The Highway Monitor MA90
 The Highway Monitor MA95
 I93NH Traffic
 Hey Did You Hear
 Safe Roads Alliance
 Right Now I/O Feed
 UEA Trip Notification
 National Emergency Alerts NE
 NewHampshireProblems
 WMUR
 Josh Judge WMUR
 Sean McDonald WMUR
 Rosa Valentin WMUR
 Jennifer Gannon WMUR
 Melinda Davenport WMUR
 Jim Foley WMUR

New Hampshire 1 News
 Megan Carpenter Fox 44/ABC 22
 Rose Spillman YCN News
 SCG-TV 23
 Salem Community TV
 WZID
 Susan Roantree WZID
 93.3 The WOLF
 WOKQ975
 99.1 Frank FM
 1490 WEMJ-AM
 Radio Nashua CC
 OC Radio Portsmouth
 Union Leader.com
 Seacoastonline.com
 Londonderry News
 Tweet NH

Laconia NH Police
 Town of Peterborough
 Boston Special Officer
 Granite State Police
 The Mall at Fox Run
 Manchester Schools SAU #37
 Concord NH Patch
 Record Enterprise
 Veterans Count
 Red Cross NH
 New Hampshire AFL-CIO
 Hampton Inn Concord
 NHGCD
 NH Finest Market
 Tweet Vermont
 Adopt a Highway
 Rockingham Alerts

Vista Vacations
 WeeksActLegacyTrail
 Motor City
 Lawrence Ma.
 City of Dover NH
 Middleton NH Police
 Valley News
 Commuter Boston
 EastWestExpress
 Transport NH
 NH Economy
 NHFamilyLiving.com
 NH Potholes
 Southern NH Emergency
 Alerts Live Incidents US
 J4 Traffic
 Action Page System